



To help you do the best job possible when using terminal blocks, we put together a selection of useful tools to accomplish just that. We offer this as a service to our customers, since some of the special tools we offer are hard to find.

Included in this tool selection are wire strippers to safely and quickly remove insulation from wire and cable and to speed the wire preparation process; semi-automatic and hand operated crimping tools for crimping ferrules onto wire ends. Our large selection of screwdrivers include insulated and uninsulated straight blade, flat tip and Phillips types.

All tools are made from the highest quality steels for superior performance and long life. The hand tools are manufactured to exacting specifications and carefully heat treated for maximum strength and durability.

TOOLS & FERRULES

Crimping Tools

Universal Ferrule Crimper

Front Conductor Entry

One die crimps a wide range of insulated and uninsulated ferrule sizes. Three Universal Ferrule Crimpers are offered to crimp different ferrule and wire size ranges up to 16mm² (6 AWG).

- Positive ratcheting with spring return
- Trapezoidal crimp geometry
- Comfort grip plastic handle
- Hardened steel frame, matte black

Universal Ferrule Crimper



Part No.	Wire/ AWG	Ferrule mm ²	Std. Pk.
E110.000	26 - 10	0.14 - 6	1

Universal Ferrule Crimper



Part No.	Wire/ AWG	Ferrule mm ²	Std. Pk.
E110.005	20 - 8	0.5 - 10	1

Universal Ferrule Crimper



Part No.	Wire/ AWG	Ferrule mm ²	Std. Pk.
E110.010	8 - 6	10 - 16	1

Ferrule Crimper

Side Conductor Entry

Individual crimp cavities conform to industry standard insulated and uninsulated ferrules from 25-50mm² (4-1 AWG).

- Positive ratcheting with spring return
- Emergency release
- Trapezoidal crimp geometry
- Comfort grip plastic handle
- Hardened steel frame, matte black

Ferrule Crimper



Part No.	Wire/ AWG	Ferrule mm ²	Std. Pk.
E110.015	4 - 2	25 - 35	1

Ferrule Crimper



Part No.	Wire/ AWG	Ferrule mm ²	Std. Pk.
E110.020	1	50	1

Ferrule Crimper



Part No.	Wire/ AWG	Ferrule mm ²	Std. Pk.
22.030	2/0-250 MCM	70 - 150	1

PNEUMATIC CRIMPING TOOLS

pneumatic crimping tools speed the crimping process of insulated or uninsulated ferrules for a wide range of wire sizes up to 8 AWG.

pneumatic crimpers are simple and easy to use. Just install the ferrule over the end of the stripped wire and insert it into either the front or side tool opening. Then touch the actuating lever or push the footswitch pedal to initiate the crimp cycle. Once the head closes it will automatically reopen after crimping. The resulting crimp features a compact trapezoidal cross section which is mechanically very strong and provides a large surface to insure a highly efficient electrical contact.

Crimp ferrules efficiently and economically. A unique dual crimping head provides convenient front or side wire entry, allowing crimping from multiple positions. This features makes crimping in tight places simple.

Choose either lever actuated, hand held units or hands-free footswitch operated table top models, in two basic tool sizes. Hand held models feature a flexible coil air-hose with 1/4" NPT interchange connector for quick hook-up with a standard push-to-connect coupler.

The table top units also include a flexible coil air hose to the footswitch and a 1/4" NPT interchange located on the footswitch for one hand push-to-connect supply hook-up. They feature a sturdy metal base with integral table clamp and dual storage trays for quick access to the ferrule supply. The air release port on the footswitch has been quieted with a sintered bronze air silencer. The footswitch has a metal frame and a tough fiberglass shroud. Its' spring return pedal provides for short actuating cycles.

Optional items for the hand held crimper include a counterbalance for maximum control and a magnetic holder for storage.

- Operates on 60 - 90 psi air supply
- Crimp insulated and uninsulated ferrules
- Trapezoidal crimp geometry
- Flexible coil air hose with 1/4" NPT interchange
- Metal tool body and base
- Hardened steel crimp head



Tool	Wire/ Ferrule Size AWG mm ²	Type	Cat. No.	Tool Wt. g (lbs.)	Std. Pk.
Hand Held Crimper with Actuating Lever Crimp Insulated Ferrules and Uninsulated Ferrules	24-14	ACT2.5-P 0.25-2.5	22.014	430 (.95)	1
Hand Held Crimper with Actuating Lever Crimp Insulated Ferrules and Uninsulated Ferrules	12-8	ACT10-P 4.0-10.0	22.015	430 (.95)	1
Table Top Crimper with Footswitch and Storage Trays Crimp Insulated Ferrules and Uninsulated Ferrules	24-14	ACT2.5-T 0.25-2.5	22.016	1000 (2.20)	1
Table Top Crimper with Footswitch and Storage Trays Crimp Insulated Ferrules and Uninsulated Ferrules	12-8	ACT10-P 4.0-10.0	22.017	1000 (2.20)	1
Magnetic Mounting Holder <i>for hand held pneumatic crimpers</i>		ACT-DXP	22.018	---	1
Counterbalance <i>for hand held pneumatic crimpers</i>		CT-DUP	22.019	---	1

FERRULES, INSULATED Industry Standard

Ferrules insure reliable electrical connections when terminating stranded flexible wire in terminal blocks, circuit breakers or other control devices. Insulated ferrules prevent conductor breakage due to bending, wire stress or vibration while facilitating wire insertion into the terminal clamp.

standard insulated ferrules are color coded by conductor size for convenient identification.

To ensure efficient ferrule crimping, always select the smallest ferrule diameter that fits the wire and use only professional crimping tools. (Please refer to the ordering pages and the Crimper Selector Guide on page 98.)

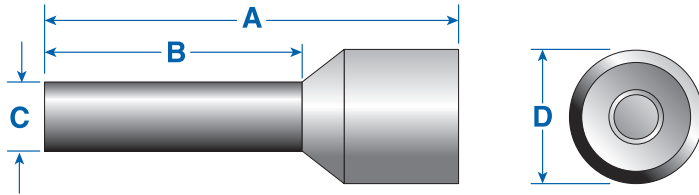
- Sleeve: polypropylene
- Tube: tin-plated copper



CRIMPER SELECTOR GUIDE

See page 98.

INDUSTRY STANDARD FERRULES



	AWG (mm2)	Color	Type	Cat. No.	Stripping Length mm (in.)	Ferrule Dimensions mm (in.)				Std. Pk.*
						A	B	C	D	
	24 (.25)	Lt. Blue	H0.25/6	2620.0	6.0(.24)	10.0 (.39)	6.0 (.24)	1.2 (.05)	2.3 (.09)	500/100
	24 (.25)	Lt. Blue	H0.25/8	2621.0	8.0(.31)	12.0 (.47)	8.0 (.31)	1.2 (.05)	2.3 (.09)	500/100
	22 (.34)	Turquoise	H0.34/6	2622.0	6.0(.24)	10.0 (.39)	6.0 (.24)	1.2 (.05)	2.5 (.10)	500/100
	22 (.34)	Turquoise	H0.34/8	2623.0	8.0(.31)	12.0 (.47)	8.0 (.31)	1.2 (.05)	2.5 (.10)	500/100
	20 (.50)	Orange	H0.50/6	2397.0	6.0(.24)	12.0 (.47)	6.0 (.24)	1.3 (.05)	2.8 (.11)	500/100
	20 (.50)	Orange	H0.50/8	2201.0	8.0(.31)	14.0 (.55)	8.0 (.31)	1.3 (.05)	2.8 (.11)	500/100
	18 (.75)	White	H0.75/6	2398.0	6.0(.24)	12.0 (.47)	6.0 (.24)	1.5 (.06)	3.3 (.13)	500/100
	18 (.75)	White	H0.75/8	2202.0	8.0(.31)	14.0 (.55)	8.0 (.31)	1.5 (.06)	3.3 (.13)	500/100
	18 (1.00)	Yellow	H1.00/6	2399.0	6.0(.24)	12.0 (.47)	6.0 (.24)	1.7 (.07)	3.5 (.14)	500/100
	18 (1.00)	Yellow	H1.00/8	2203.0	8.0(.31)	14.0 (.55)	8.0 (.31)	1.7 (.07)	3.5 (.14)	500/100
	16 (1.50)	Red	H1.50/8	2204.0	8.0(.31)	14.0 (.55)	8.0 (.31)	2.0 (.08)	4.0 (.16)	500/100
	16 (1.50)	Red	H1.50/10	2400.0	10.0(.39)	16.0 (.63)	10.0 (.39)	2.0 (.08)	4.0 (.16)	500/100
	16 (1.50)	Red	H1.50/18	2205.0	18.0(.71)	24.0 (.94)	18.0 (.71)	2.0 (.08)	4.0 (.16)	500/100
	14 (2.50)	Blue	H2.50/8	2206.0	8.0(.31)	14.0 (.55)	8.0 (.31)	2.5 (.10)	4.7 (.19)	500/100
	14 (2.50)	Blue	H2.50/12	2401.0	12.0(.47)	18.0 (.71)	12.0 (.47)	2.5 (.10)	4.7 (.19)	500/100
	14 (2.50)	Blue	H2.50/18	2207.0	18.0(.71)	24.0 (.94)	18.0 (.71)	2.5 (.10)	4.7 (.19)	500/100
	12 (4.00)	Gray	H4.00/10	2208.0	10.0(.39)	17.0 (.67)	10.0 (.39)	3.2 (.13)	5.4 (.21)	500/100
	12 (4.00)	Gray	H4.00/12	2402.0	12.0(.47)	20.0 (.79)	12.0 (.47)	3.2 (.13)	5.4 (.21)	500/100
	12 (4.00)	Gray	H4.00/18	2209.0	18.0(.71)	26.0 (1.02)	18.0 (.71)	3.2 (.13)	5.4 (.21)	100
	10 (6.00)	Black	H6.00/12	2210.0	12.0(.47)	20.0 (.79)	12.0 (.47)	3.9 (.15)	6.9 (.27)	100
	10 (6.00)	Black	H6.00/18	2211.0	18.0(.71)	26.0 (1.02)	18.0 (.71)	3.9 (.15)	6.9 (.27)	100
	8 (10.00)	Ivory	H10.0/12	2212.0	12.0(.47)	22.0 (.87)	12.0 (.47)	4.9 (.19)	8.4 (.33)	100
	8 (10.00)	Ivory	H10.0/18	2213.0	18.0(.71)	28.0 (1.10)	18.0 (.71)	4.9 (.19)	8.4 (.33)	100
	6 (16.00)	Green	H16.0/12	2214.0	12.0(.47)	24.0 (.94)	12.0 (.47)	6.2 (.24)	9.6 (.38)	100
	6 (16.00)	Green	H16.0/18	2215.0	18.0(.71)	28.0 (1.10)	18.0 (.71)	6.2 (.24)	9.6 (.38)	100
	4 (25.00)	Brown	H25.0/18	2267.0	18.0(.71)	30.0 (1.18)	18.0 (.71)	7.7 (.30)	12.0(.47)	50
	4 (25.00)	Brown	H25.0/22	2272.0	22.0(.87)	36.0 (1.42)	22.0 (.87)	7.7 (.30)	12.0(.47)	50
	2 (35.00)	Beige	H35.0/18	2276.0	18.0(.71)	30.0 (1.18)	18.0 (.71)	8.7 (.34)	13.5(.53)	50
	2 (35.00)	Beige	H35.0/25	2390.0	25.0(.98)	39.0 (1.54)	25.0 (.98)	8.7 (.34)	13.5(.53)	50
	1 (50.00)	Olive	H50.0/20	2500.0	20.0(.79)	36.0 (1.42)	20.0 (.79)	10.9(.43)	16.0(.63)	50
	2/0 (70.00)	Yellow	H70.0/21	2786.0	20.0(.79)	37.0 (1.46)	20.0 (.79)	13.4(.53)	17.0(.67)	25
	3/0 (95.00)	Red	H95.0/25	2787.0	25.0(.98)	44.0 (1.73)	25.0 (.98)	15.4(.61)	19.0(.75)	25
	4/0 (120.00)	Blue	H120.0/27	2788.0	27.0(1.06)	48.0 (1.89)	27.0 (1.06)	17.6(.69)	22.4(.88)	25
	250MCM(150.0)	Yellow	H150.0/27	2789.0	32.0(1.26)	58.0 (2.28)	32.0 (1.26)	20.5(.81)	25.0(.98)	25

* Different standard packs are available as shown. To order the desired standard pack, please use the quantity required as a suffix to the cat. no.
Example for 100 standard pack: Type H0.25/6, Cat. No. 2620.0/100

FERRULES, INSULATED DIN Standard

Ferrules insure reliable electrical connections when terminating stranded flexible wire in terminal blocks, circuit breakers or other control devices.

Insulated ferrules prevent conductor breakage due to bending, wire stress or vibration while facilitating wire insertion into the terminal clamp.

DIN standard ferrules are in compliance with DIN requirements, making them ideal for export applications. They also have a specified color code convention that differs from the color code used for industry standard ferrules.

To ensure efficient ferrule crimping, always select the smallest ferrule diameter that fits the wire and use only professional crimping tools. (Please refer to the ordering pages and the Crimper Selector Guide on page 98.)

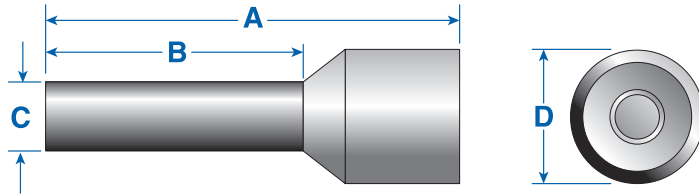
- Sleeve: polypropylene
- Tube: tin plated copper



CRIMPER SELECTOR GUIDE

See page 98.

DIN STANDARD FERRULES



	AWG (mm ²)	Color	Type	Cat. No.	Stripping Length mm (in.)	Ferrule Dimensions mm (in.)	A	B	C	D	Std. Pk.*
	20 (.50)	White	H0.50/6	2863.0	6.0(.24)	12.0 (.47)	6.0 (.24)	1.3 (.05)	2.8 (.11)	500/100	
	20 (.50)	White	H0.50/8	2864.0	8.0(.31)	14.0 (.55)	8.0 (.31)	1.3 (.05)	2.8 (.11)	500/100	
	20 (.50)	White	H0.50/10	2865.0	10.0(.39)	16.0 (.63)	10.0(.39)	1.3 (.05)	2.8 (.11)	500/100	
	18 (.75)	Gray	H0.75/6	2866.0	6.0(.24)	12.0 (.47)	6.0 (.24)	1.5 (.06)	3.3 (.13)	500/100	
	18 (.75)	Gray	H0.75/8	2867.0	8.0(.31)	14.0 (.55)	8.0 (.31)	1.5 (.06)	3.3 (.13)	500/100	
	18 (.75)	Gray	H0.75/10	2868.0	10.0(.39)	16.0 (.63)	10.0(.39)	1.5 (.06)	3.3 (.13)	500/100	
	18 (.75)	Gray	H0.75/12	2869.0	12.0(.47)	18.0 (.71)	12.0(.47)	1.5 (.06)	3.3 (.13)	500/100	
	18 (1.00)	Red	H1.00/6	2870.0	6.0(.24)	12.0 (.47)	6.0 (.24)	1.7 (.07)	3.5 (.14)	500/100	
	18 (1.00)	Red	H1.00/8	2871.0	8.0(.31)	14.0 (.55)	8.0 (.31)	1.7 (.07)	3.5 (.14)	500/100	
	18 (1.00)	Red	H1.00/10	2872.0	10.0(.39)	16.0 (.63)	10.0(.39)	1.7 (.07)	3.5 (.14)	500/100	
	18 (1.00)	Red	H1.00/12	2840.0	12.0(.47)	18.0 (.71)	12.0(.47)	1.7 (.07)	3.5 (.14)	500/100	
	16 (1.50)	Black	H1.50/8	2841.0	8.0(.31)	14.0 (.55)	8.0 (.31)	2.0 (.08)	4.0 (.16)	500/100	
	16 (1.50)	Black	H1.50/10	2842.0	10.0(.39)	16.0 (.63)	10.0(.39)	2.0 (.08)	4.0 (.16)	500/100	
	16 (1.50)	Black	H1.50/12	2843.0	12.0(.47)	18.0 (.71)	12.0(.47)	2.0 (.08)	4.0 (.16)	500/100	
	16 (1.50)	Black	H1.50/18	2844.0	18.0(.71)	24.0 (.94)	18.0(.71)	2.0 (.08)	4.0 (.16)	500/100	
	14 (2.50)	Blue	H2.50/8	2845.0	8.0(.31)	14.0 (.55)	8.0 (.31)	2.5 (.10)	4.7 (.19)	500/100	
	14 (2.50)	Blue	H2.50/12	2846.0	12.0(.47)	18.0 (.71)	12.0(.47)	2.5 (.10)	4.7 (.19)	500/100	
	14 (2.50)	Blue	H2.50/18	2847.0	18.0(.71)	24.0 (.94)	18.0(.71)	2.5 (.10)	4.7 (.19)	500/100	
	12 (4.00)	Gray	H4.00/10	2848.0	10.0(.39)	17.0 (.71)	10.0(.39)	3.2 (.13)	5.4 (.21)	500/100	
	12 (4.00)	Gray	H4.00/12	2849.0	12.0(.47)	20.0 (.79)	12.0(.47)	3.2 (.13)	5.4 (.21)	500/100	
	12 (4.00)	Gray	H4.00/18	2850.0	18.0(.71)	26.0 (1.02)	18.0(.71)	3.2 (.13)	5.4 (.21)	100	
	10 (6.00)	Yellow	H6.00/12	2851.0	12.0(.47)	20.0 (.79)	12.0(.47)	3.9 (.16)	6.9 (.27)	100	
	10 (6.00)	Yellow	H6.00/18	2852.0	18.0(.71)	26.0 (1.02)	18.0(.71)	3.9 (.16)	6.9 (.27)	100	
	8 (10.00)	Red	H10.00/12	2853.0	12.0(.47)	22.0 (.87)	12.0(.47)	4.9 (.20)	8.4 (.33)	100	
	8 (10.00)	Red	H10.00/18	2854.0	18.0(.71)	28.0 (1.10)	18.0(.71)	4.9 (.20)	8.4 (.33)	100	
	6 (16.00)	Blue	H16.00/12	2855.0	12.0(.47)	24.0 (.87)	12.0(.47)	6.2 (.24)	9.6 (.38)	100	
	6 (16.00)	Blue	H16.00/18	2856.0	18.0(.71)	28.0 (1.10)	18.0(.71)	6.2 (.24)	9.6 (.38)	100	
	4 (25.00)	Yellow	H25.00/18	2857.0	18.0(.71)	30.0 (1.18)	18.0(.71)	7.7 (.30)	12.0(.47)	50	
	4 (25.00)	Yellow	H25.00/22	2858.0	22.0(.87)	36.0 (1.5)	22.0(.87)	7.7 (.30)	12.0(.47)	50	
	2 (35.00)	Red	H35.00/18	2859.0	18.0(.71)	30.0 (1.18)	18.0(.71)	8.7 (.34)	13.5(.53)	50	
	2(35.00)	Red	H35.00/25	2860.0	25.0(.98)	39.0 (1.54)	25.0(.98)	8.7 (.34)	13.5(.53)	50	
	1 (50.00)	Blue	H50.00/20	2861.0	20.0(.79)	36.0 (1.5)	20.0(.79)	10.9(.43)	16.0(.63)	50	

* Different standard packs are available as shown. To order the desired standard pack, please use the quantity required as a suffix to the cat. no.
Example for 100 standard pack: Type H0.50/6, Cat. No. 2863.0/100

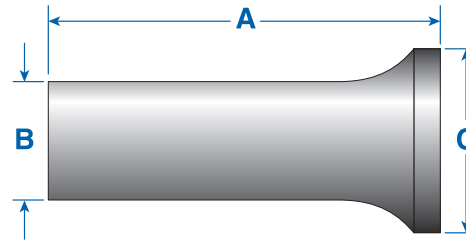
FERRULES
Uninsulated

Ferrules insure reliable electrical connections when terminating stranded flexible wire in terminal blocks, circuit breakers or other control devices.

Uninsulated ferrules prevent wire strands from fraying and breaking and are extremely cost effective. Their shorter lengths and uninsulated bodies offer advantages when making terminations in printed circuit board terminal blocks and in other terminal blocks with smaller clamps or narrow widths.

To ensure efficient ferrule crimping, always select the smallest ferrule diameter that fits the wire and use only professional crimping tools. (Please refer to the ordering pages and the Crimper Selector Guide on page 98.)

- Tube :tin plated copper



	AWG (mm ²)	Type	Cat. No.	Stripping Length mm (in.)	Ferrule Dimensions mm (in.)			Std. Pk.*
					A	B	C	
	20 (.50)	H0.50/6	2216.0	6.0 (.24)	6.0 (.24)	1.3 (.05)	2.1 (.08)	1000/100
	18 (.75)	H0.75/6	2217.0	6.0 (.24)	6.0 (.24)	1.5 (.06)	2.3 (.09)	1000/100
	18 (.75)	H0.75/10	2218.0	10.0 (.39)	10.0 (.39)	1.5 (.06)	2.3 (.09)	1000/100
	18 (1.00)	H1.00/6	2219.0	6.0 (.24)	6.0 (.24)	1.7 (.07)	2.5 (.10)	1000/100
	18 (1.00)	H1.00/10	2220.0	10.0 (.39)	10.0 (.39)	1.7 (.07)	2.5 (.10)	1000/100
	16 (1.50)	H1.50/7	2221.0	7.0 (.28)	7.0 (.28)	2.3 (.09)	2.8 (.11)	1000/100
	16 (1.50)	H1.50/10	2222.0	10.0 (.39)	10.0 (.39)	2.3 (.09)	2.8 (.11)	1000/100
	14 (2.50)	H2.50/7	2223.0	7.0 (.28)	7.0 (.28)	2.5 (.10)	3.4 (.13)	1000/100
	14 (2.50)	H2.50/12	2224.0	12.0 (.47)	12.0 (.47)	2.5 (.10)	3.4 (.13)	1000/100
	12 (4.00)	H4.00/9	2225.0	9.0 (.35)	9.0 (.35)	3.2 (.13)	4.0 (.16)	1000/100
	12 (4.00)	H4.00/12	2226.0	12.0 (.47)	12.0 (.47)	3.2 (.13)	4.0 (.16)	1000/100
	10 (6.00)	H6.00/12	2227.0	12.0 (.47)	12.0 (.47)	3.9 (.15)	4.7 (.19)	500/100
	10 (6.00)	H6.00/15	2388.0	15.0 (.59)	15.0 (.59)	3.9 (.15)	4.7 (.19)	500/100
	8 (10.00)	H10.00/12	2228.0	12.0 (.47)	12.0 (.47)	4.9 (.19)	5.8 (.23)	500/100
	8 (10.00)	H10.00/15	2389.0	15.0 (.59)	15.0 (.59)	4.9 (.19)	5.8 (.23)	500/100
	8 (10.00)	H10.00/18	2229.0	18.0 (.71)	18.0 (.71)	4.9 (.19)	5.8 (.23)	500/100
	6 (16.00)	H16.00/12	2391.0	12.0 (.47)	12.0 (.47)	6.2 (.24)	7.5 (.30)	500/100
	6 (16.00)	H16.00/15	2392.0	15.0 (.59)	15.0 (.59)	6.2 (.24)	7.5 (.30)	500/100
	6 (16.00)	H16.00/18	2393.0	18.0 (.71)	18.0 (.71)	6.2 (.24)	7.5 (.30)	100
	4 (25.00)	H25.00/15	2394.0	15.0 (.59)	15.0 (.59)	7.7 (.30)	9.5 (.37)	500/100
	4 (25.00)	H25.00/18	2395.0	18.0 (.71)	18.0 (.71)	7.7 (.30)	9.5 (.37)	100
	2 (35.00)	H35.00/18	2396.0	18.0 (.71)	18.0 (.71)	8.7 (.34)	11.0 (.43)	100
	1/0 (50.00)	H50.00/32	2816.0	32.0 (1.26)	32.0 (1.26)	10.9 (.43)	13.0 (.51)	100
	2/0 (70.00)	H70.00/25	2790.0	26.0 (1.02)	25.0 (.98)	13.3 (.52)	15.0 (.59)	100
	3/0 (95.00)	H95.00/32	2791.0	30.0 (1.18)	32.0 (1.26)	15.3 (.60)	17.0 (.67)	50
	4/0 (120.00)	H120.00/32	2792.0	32.0 (1.26)	32.0 (1.26)	17.5 (.69)	19.0 (.75)	50
	250MCM(150.00)	H150.00/32	2793.0	38.0 (1.50)	38.0 (1.50)	19.5 (.77)	21.0 (.83)	50
	350MCM(185.00)	H185.00/32	2815.0	40.0 (1.57)	40.0 (1.57)	21.2 (.83)	23.5 (.93)	25

CRIMPER SELECTOR GUIDE

See page 98.

* Different standard packs are available as shown. To order the desired standard pack, please use the quantity required as a suffix to the cat. no.
Example for 100 standard pack: Type H0.50/6, Cat. No. 2216.0/100

DUAL WIRE FERRULES

Insulated

Dual Wire Ferrules have larger diameters and special shaped sleeves that accept two conductors of the same or different size. They provide an efficient connection of multiple wires in the same terminal clamp or simplify wire jumpering between terminal clamps. They are color coded with the same convention as the insulated DIN standard ferrules.

To ensure efficient ferrule crimping always select the smallest ferrule diameter that fits the wire and use only professional crimping tools. (Please refer to the ordering pages and the Crimper Selector Guide on page 98.)

- Sleeve: polypropylene
- Tube: tin plated copper



INSULATED FERRULES

Assortment Box

Handy Assortment Boxes for convenient dispensing and storage of Industry and DIN Standard Insulated Ferrules. Types AB1-S and AB1-D are equipped with five different ferrule sizes. Types AB2-S and AB2-D are equipped with four different ferrule sizes. Contents of each box is listed. Dimensions for industry and DIN standard insulated ferrules are listed on pages 94-95.

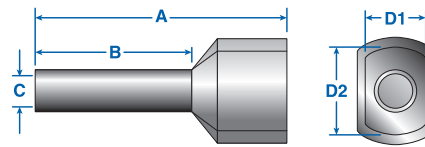


AB1-S

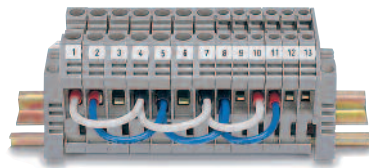


AB2-S

DUAL WIRE FERRULES



	Wires x AWG (mm ²)	Color	Type	Cat. No.	Stripping Length mm (in.)	A	B	C	D1	D2	Std. Pk.*
	2x20 (2x.50)	White	H2x0.50/8	2794.0	11.0 (.43)	14.6 (.57)	8.2 (.32)	1.7 (.07)	3.0 (.12)	5.0 (.20)	500/100
	2x18 (2x.75)	Gray	H2x0.75/8	2775.0	11.0 (.43)	14.6 (.57)	8.2 (.32)	2.0 (.08)	3.0 (.12)	5.5 (.22)	500/100
	2x18 (2x.75)	Gray	H2x0.75/10	2795.0	13.0 (.51)	16.4 (.65)	10.0 (.39)	2.0 (.08)	3.0 (.12)	5.5 (.22)	500/100
	2x18 (2x1.0)	Red	H2x1.00/8	2776.0	11.0 (.43)	15.4 (.61)	8.2 (.32)	2.4 (.09)	3.2 (.13)	5.8 (.23)	500/100
	2x18 (2x1.0)	Red	H2x1.00/18	2796.0	21.0 (.83)	25.2 (.99)	18.0 (.71)	2.4 (.09)	3.2 (.13)	5.8 (.23)	500/100
	2x16 (2x1.5)	Black	H2x1.50/8	2777.0	12.0 (.47)	15.8 (.62)	8.2 (.32)	2.6 (.10)	3.6 (.14)	6.5 (.26)	500/100
	2x16 (2x1.5)	Black	H2x1.50/12	2797.0	16.0 (.63)	19.6 (.77)	12.0 (.47)	2.6 (.10)	3.6 (.14)	6.5 (.26)	500/100
	2x14 (2x2.5)	Blue	H2x2.50/10	2778.0	14.0 (.55)	18.5 (.73)	10.0 (.39)	3.3 (.13)	4.5 (.18)	8.0 (.31)	250/100
	2x14 (2x2.5)	Blue	H2x2.50/12	2798.0	17.0 (.67)	20.5 (.80)	12.0 (.47)	3.3 (.13)	4.5 (.18)	8.0 (.31)	250/100
	2x12 (2x4.0)	Gray	H2x4.00/12	2799.0	16.0 (.63)	22.0 (.87)	12.0 (.47)	3.9 (.15)	5.2 (.20)	9.0 (.35)	100
	2x10 (2x6.0)	Yellow	H2x6.00/12	2800.0	18.0 (.71)	23.0 (.91)	12.0 (.47)	5.0 (.20)	6.2 (.24)	11.4 (.45)	100
	2x8 (2x10.0)	Red	H2x10.00/12	2801.0	18.0 (.71)	24.0 (.94)	12.0 (.47)	6.2 (.24)	7.6 (.30)	13.4 (.53)	100
	2X6 (2x16.0)	Blue	H2x16.00/16	2802.0	20.0 (.79)	29.0 (1.14)	16.0 (.63)	8.9 (.35)	9.5 (.37)	17.2 (.68)	100/50



* Different standard packs are available for many ferrules. To order the desired standard pack, please use the quantity required as a suffix to the Cat. No.

**Example: Type H2x0.50/0,
Cat. No. 2794.0/100 for a standard pack of 100**

Ferrule Qty.	AWG (mm ²)	Ferrule Type	Ferrule Cat. No.	Ferrule Color	Type	Cat. No.	Std. Pk.
AB1-S Industry Standard					AB1-S	2884.9	1
50	20 (.50)	H0.50/8	2201.0	Orange			
100	20 (.75)	H0.75/8	2202.0	White			
100	18 (1.00)	H1.00/6	2399.0	Yellow			
100	16 (1.50)	H1.50/8	2204.0	Red			
50	14 (2.50)	H2.50/8	2206.0	Blue			
AB2-S Industry Standard					AB2-S	2885.9	1
50	12 (.40)	H4.00/10	2208.0	Gray			
20	10 (6.0)	H6.00/12	2210.0	Black			
20	8 (10.0)	H10.00/12	2212.0	Ivory			
10	6 (16.0)	H16.00/12	2214.0	Green			
AB1-D DIN Standard					AB1-D	2884.0	1
50	20 (.50)	H0.50/6	2864.0	White			
100	20 (.75)	H0.75/8	2867.0	Gray			
100	18 (1.0)	H1.00/8	2871.0	Red			
100	16 (1.5)	H1.50/8	2841.0	Black			
50	14 (2.5)	H2.50/8	2845.0	Blue			
AB2-D DIN Standard					AB2-D	2885.0	1
50	12 (4.00)	H4.00/10	2848.0	Gray			
20	10 (6.00)	H6.00/12	2851.0	Yellow			
20	8 (10.00)	H10.00/12	2853.0	Red			
10	6 (16.00)	H16.00/12	2855.0	Blue			