

Reducer, Polyamide

- Material:**
- Polyamide
 - Glass fiber reinforced

- Characteristics:**
- PG Thread
 - Metric Thread

Temperature Range PA -40 to 100°C (-40 to 212°F)
--

External thread	Internal thread	SW mm	Thread length mm	Cat. No. Light Grey	Std. Pk.
Type B					
PG					
PG 11	PG 7	22	8	7005302	100
PG 13.5	PG 7	24	9	7005304	100
PG 13.5	PG 9	24	9	7005305	100
PG 16	PG 9	27	10	7005307	100
PG 16	PG 11	27	10	7005308	100
PG 21	PG 11	32	11	7005310	100
PG 21	PG 13.5	32	11	7005311	100
PG 21	PG 16	32	11	7005312	100
PG 29	PG 13.5	40	11	7005313	50
PG 29	PG 16	40	11	7005314	50
PG 29	PG 21	40	11	7005315	50
PG 36	PG 16	50	13	7005316	50
PG 36	PG 21	50	13	7005317	50
PG 36	PG 29	50	18	7005318	50
PG 42	PG 21	55	18	7005319	25
PG 42	PG 29	55	18	7005320	25
PG 42	PG 36	55	18	7005321	25
PG 48	PG 29	60	18	7005322	25
PG 48	PG 36	60	14	7005323	25
PG 48	PG 42	60	17	7005324	25
Type A					
PG 9	PG 7	19	8	7005301	100
PG 11	PG 9	22	8	7005303	100
PG 13.5	PG 11	24	9	7005306	100
PG 16	PG 13.5	27	10	7005309	100



Type B



Type A

External thread	Internal thread	SW mm	Thread length mm	Cat. No. Light Grey	Std. Pk.
Metric					
M 16 x 1.5	M 12 x 1.5	20	8	7008516	50
M 20 x 1.5	M 12 x 1.5	24	8	7008519	50
M 20 x 1.5	M 16 x 1.5	24	9	7008520	50
M 25 x 1.5	M 12 x 1.5	29	8	7008523	50
M 25 x 1.5	M 16 x 1.5	29	8	7008524	50
M 25 x 1.5	M 20 x 1.5	30	10	7008525	20
M 32 x 1.5	M 16 x 1.5	36	10	7008530	50
M 32 x 1.5	M 20 x 1.5	36	10	7008531	50
M 32 x 1.5	M 25 x 1.5	36	11	7008532	20
M 40 x 1.5	M 20 x 1.5	46	10	7008538	50
M 40 x 1.5	M 25 x 1.5	46	10	7008539	20
M 40 x 1.5	M 32 x 1.5	44	12	7008540	20
M 50 x 1.5	M 25 x 1.5	55	12	7008548	20
M 50 x 1.5	M 32 x 1.5	55	12	7008549	20
M 50 x 1.5	M 40 x 1.5	55	13	7008550	10
M 63 x 1.5	M 32 x 1.5	68	12	7008561	20
M 63 x 1.5	M 40 x 1.5	68	12	7008562	20
M 63 x 1.5	M 50 x 1.5	70	15	7008563	5



Reducer, Nickel-Plated Brass

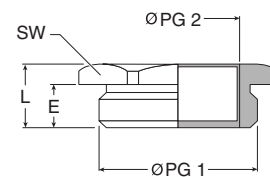
Material:

- Nickel-plated brass
- O-ring: Nitril

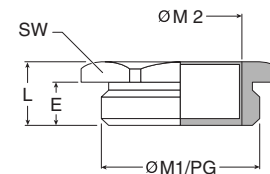
Characteristics:

- PG thread
- Metric thread
- Hexagon

External thread	Internal thread	SW mm	Thread length mm (E)	Complete length mm (L)	Cat. No. without O-ring	Cat. No. with O-ring	Std. Pk.
PG 1	PG 2						
PG 9	PG 7	17	5	8	6102018	6102300	100
PG 11	PG 9	19	6	9	6102034	6102310	100
PG 11	PG 7	19	6	9	6102030	6102311	100
PG 13.5	PG 11	21	6	9	6102077	6102320	100
PG 13.5	PG 9	21	6	9	6102042	6102321	100
PG 13.5	PG 7	21	6	8.5	6102026	6102322	100
PG 16	PG 13.5	23	6	9	6102115	6102330	100
PG 16	PG 11	23	6	9	6102085	6102331	100
PG 16	PG 9	23	6	9	6102050	6102332	100
PG 16	PG 7	24	7	10	–	6102333	100
PG 21	PG 7	24	7	10	6102158	6102340	100
PG 21	PG 13.5	29	7	10	6102123	6102341	50
PG 21	PG 11	29	7	10	6102093	6102342	20
PG 21	PG 9	29	7	10	6102069	–	50
PG 29	PG 21	39	8	11	6102190	6102350	25
PG 29	PG 16	39	8	11	6102166	6102351	25
PG 29	PG 13.5	39	8	11	6102131	6102352	25
PG 29	PG 11	39	8	11	6102107	–	25
PG 36	PG 29	50	8	11	6102220	6102360	25
PG 36	PG 21	50	8	11	6102204	6102361	25
PG 36	PG 13.5	50	8	11	6102140	–	25
PG 42	PG 36	64	10	14	6102241	6102370	25
PG 42	PG 29	64	10	14	6102239	6102371	25
PG 48	PG 42	64	10	14	6102258	6102380	25
PG 48	PG 36	64	10	14	6102255	6102381	25
PG 48	PG 29	64	10	14	6102247	–	25
PG 48	PG 21	64	10	14	6102212	–	25
PG 48	PG 16	64	10	14	6102182	–	25



External thread	Internal thread	SW mm	Thread length mm (E)	Complete length mm (L)	Cat. No. without O-ring	Cat. No. with O-ring	Std. Pk.
Metric 1	Metric 2						
M 16 x 1.5	M 12 x 1.5	20	7	10	6102400	6102450	50
M 20 x 1.5	M 12 x 1.5	24	7	10	6102404	6102455	50
M 20 x 1.5	M 16 x 1.5	24	7	10	6102405	6102460	50
M 25 x 1.5	M 16 x 1.5	30	8	11.5	6102409	6102464	20
M 25 x 1.5	M 20 x 1.5	30	8	11.5	6102410	6102465	20
M 32 x 1.5	M 16 x 1.5	36	8.5	12.5	6102414	6102468	20
M 32 x 1.5	M 20 x 1.5	36	8.5	12.5	6102413	6102469	20
M 32 x 1.5	M 25 x 1.5	36	8.5	12.5	6102415	6102470	20
M 40 x 1.5	M 25 x 1.5	42	8.5	12.5	6102419	6102476	10
M 40 x 1.5	M 32 x 1.5	42	8.5	12.5	6102420	6102475	10
M 50 x 1.5	M 32 x 1.5	55	9.5	14.5	6102426	6102479	10
M 50 x 1.5	M 40 x 1.5	55	9.5	14.5	6102425	6102480	5
M 63 x 1.5	M 40 x 1.5	70	10.5	17.5	6102429	6102484	1
M 63 x 1.5	M 50 x 1.5	70	10.5	17.5	6102430	6102485	1
M 75 x 1.5	M 63 x 1.5	80	11.5	19.5	6102435	6102490	1
PG	Metric 2						
PG 9	M 6 x 1.0	18	6.5	9.5	–	6104106	50
PG 9	M 8 x 1.25	18	6.5	9.5	–	6104108	50
PG 9	M 10 x 1.5	18	6.5	9.5	–	6104110	50
PG 11	M 6 x 1.0	20	6.5	9.5	–	6104206	50
PG 11	M 8 x 1.25	20	6.5	9.5	–	6104208	50
PG 11	M 10 x 1.5	20	6.5	9.5	–	6104210	50
PG 11	M 12 x 1.5	20	5	8	–	6104212	50
PG 16	M 16 x 1.5	24	7	10	–	6104416	50
PG 21	M 25 x 1.5	30	7.5	11	–	6104525	50
PG 29	M 32 x 1.5	38	8	12	–	6104632	50

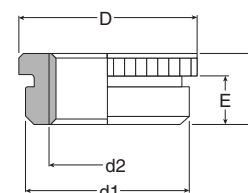
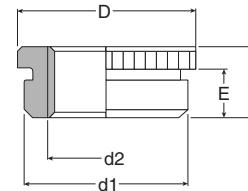
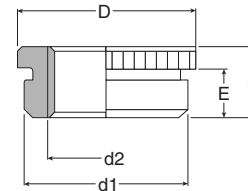


Reducer, Ribbed, Nickel-Plated Brass

Material:
• Nickel-plated brass

Characteristics:
• PG/Metric external thread
• PG/Metric internal thread
• Round ribbed

External thread (d1)	Internal thread (d2)	Diameter mm (D)	Thread length mm (E)	Complete length mm (L)	Cat. No.	Std. Pk.
Formerly DIN 46300						
PG	PG					
PG 9	PG 7	17	6	8.5	6100015	50
PG 11	PG 7	20	6	8.5	6100023	50
PG 11	PG 9	20	6	9	6100031	50
PG 13.5	PG 7	22	6.5	9	6100040	50
PG 13.5	PG 9	22	6.5	9.5	6100058	50
PG 13.5	PG 11	22	6.5	9.5	6100066	50
PG 16	PG 7	24	6.5	9.5	6100074	25
PG 16	PG 9	24	6.5	9.5	6100082	25
PG 16	PG 11	24	6.5	9.5	6100090	25
PG 16	PG 13.5	24	6.5	9.5	6100104	25
PG 21	PG 11	30	7	10	6100112	20
PG 21	PG 13.5	30	7	10	6100120	20
PG 21	PG 16	30	7	10	6100139	20
PG 29	PG 16	39	8	11.5	6100147	15
PG 29	PG 21	39	8	11.5	6100155	15
PG 36	PG 21	50	9	12.5	6100163	10
PG 36	PG 29	50	9	12.5	6100171	10
PG 42	PG 29	57	10	14	6100180	10
PG 42	PG 36	57	10	14	6100198	10
PG 48	PG 36	64	10	14	6100201	10
PG 48	PG 42	64	10	14	6100210	10



Metric	PG					
M 16 x 1.5	PG 7	20	6	9	6104716	100
M 20 x 1.5	PG 9	24	6.5	9.5	6104720	50
M 25 x 1.5	PG 11	30	7	10	6104725	50
M 25 x 1.5	PG 13.5	30	7	10	6104726	50
M 25 x 1.5	PG 16	30	7	10	6104727	50
M 32 x 1.5	PG 16	34	8	11.5	6104732	20
M 32 x 1.5	PG 21	34	8	11.5	6104733	20
M 40 x 1.5	PG 21	50	9	12	6104740	10
M 50 x 1.5	PG 29	57	9	12	6104750	5
M 63 x 1.5	PG 36	70	10.5	14.5	6104763	1
M 63 x 1.5	PG 42	70	10.5	14.5	6104764	1

Metric	Metric					
M 16 x 1.5	M 12 x 1.5	20	7	10	6104816	50
M 20 x 1.5	M 12 x 1.5	24	7	10	6104819	50
M 20 x 1.5	M 16 x 1.5	24	7	10	6104820	50
M 25 x 1.5	M 16 x 1.5	30	8	11.5	6104824	50
M 25 x 1.5	M 20 x 1.5	30	8	11.5	6104825	50
M 32 x 1.5	M 20 x 1.5	34	8.5	12.5	6104831	20
M 32 x 1.5	M 25 x 1.5	34	8.5	12.5	6104832	20
M 40 x 1.5	M 25 x 1.5	50	8.5	12.5	6104839	20
M 40 x 1.5	M 32 x 1.5	50	8.5	12.5	6104840	20
M 50 x 1.5	M 32 x 1.5	57	9.5	14.5	6104849	10
M 50 x 1.5	M 40 x 1.5	57	9.5	14.5	6104850	10
M 63 x 1.5	M 40 x 1.5	70	10.5	17.5	6104862	5
M 63 x 1.5	M 50 x 1.5	70	10.5	17.5	6104863	5
M 75 x 1.5	M 63 x 1.5	80	11.5	19.5	6104875	1
PG	Metric					
PG 16	M 20 x 1.5	24	7	10	6100416	50
PG 21	M 25 x 1.5	30	8	11.5	6100421	20
PG 29	M 25 x 1.5	39	9	12.5	6100429	20

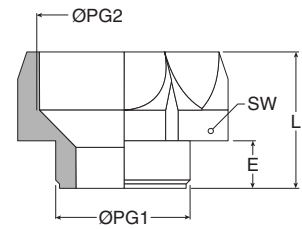
Enlarger, Polycarbonate

Material:
 • Polycarbonate

Characteristics:
 • PG external thread
 • PG internal thread

Temperature Range PC -40 to 135°C (-40 to 275°F)
--

External thread	Internal thread	SW mm	Thread length mm (E)	Complete length mm (L)	Cat. No. Light Gray	Std. Pk.
PG 1	PG 2					
PG 7	PG 9	19	6.5	19	7004010	50
PG 9	PG 11	22	7	21.5	7004028	50
PG 11	PG 13.5	24	9	23.5	7004036	50
PG 13.5	PG 16	27	9	23	7004044	50
PG 16	PG 21	32	10	25.5	7004052	25
PG 21	PG 29	41	10	28.5	7004060	25
PG 29	PG 36	55	12	38	7004079	1
PG 36	PG 42	60	14	45	7004087	1
PG 42	PG 48	65	16	39	7004095	1



Enlarger, Polyamide

Material:

- Polyamide glass fiber reinforced

Characteristics:

- PG/Metric external thread
- PG/Metric internal thread

Temperature Range PA -30 to 100°C (-22 to 212°F)
--

External thread	Internal thread	SW mm	Thread length mm	Complete length mm	Cat. No. Light Gray	Std. Pk.
PG						
PG 7	PG 9	19	7	20	7004200	100
PG 9	PG 11	22	8	23	7004201	100
PG 11	PG 13.5	24	8	23	7004202	100
PG 13.5	PG 16	27	9	26	7004203	100
PG 16	PG 21	32	9	29	7004204	100
PG 21	PG 29	42	10	32	7004205	50
PG 29	PG 36	53	11	35.5	7004206	25
PG 36	PG 42	60	13	40.5	7004207	10
PG 42	PG 48	65	13	41	7004208	10
Metric						
M12 x 1.5	M16 x 1.5	20	8	18.5	7004300	50
M16 x 1.5	M20 x 1.5	24	8	20	7004301	50
M20 x 1.5	M25 x 1.5	30	9	22	7004302	50
M25 x 1.5	M32 x 1.5	36	10	24	7004303	20
M32 x 1.5	M40 x 1.5	44	11	26	7004304	20
M40 x 1.5	M50 x 1.5	55	12	28	7004305	20
M50 x 1.5	M63 x 1.5	70	13	31.5	7004306	10



Enlarger, Nickel-Plated Brass

Material:

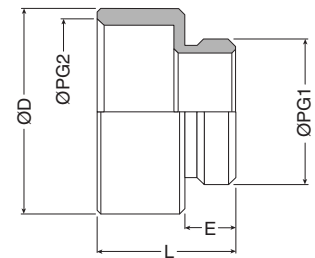
- Nickel-plated brass

Characteristics:

- PG external thread
- PG internal thread
- Round

According to DIN 259 and formerly by DIN 46320

External thread	Internal thread	Diameter mm (D)	Thread length mm (E)	Complete length mm (L)	Cat. No.	Std. Pk.
PG 1	PG 2					
PG 7	PG 9	17	5	15	6200010	50
PG 9	PG 11	20	6	16.5	6200028	50
PG 9	PG 13.5	22	6	17.5	6200036	50
PG 11	PG 13.5	22	6	17.5	6200044	50
PG 11	PG 16	24	6	18.5	6200052	25
PG 13.5	PG 16	24	6.5	19	6200060	25
PG 13.5	PG 21	30	6.5	21	6200079	20
PG 16	PG 21	30	6.5	21	6200087	20
PG 21	PG 29	39	7	23	6200095	15
PG 29	PG 36	50	8	28	6200109	10
PG 36	PG 42	57	9	31	6200117	10
PG 42	PG 48	64	10	33	6200125	10



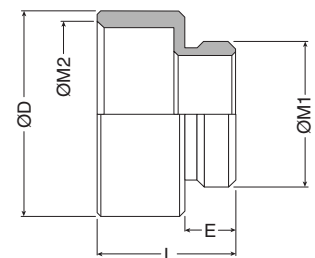
Material:

- Nickel-plated brass

Characteristics:

- Metric external thread
- Metric internal thread
- Round

External thread	Internal thread	Diameter mm (D)	Thread length mm (E)	Complete length mm (L)	Cat. No.	Std. Pk.
Metric 1	Metric 2					
M 12 x 1.5	M 16 x 1.5	18	5	15	6200212	50
M 16 x 1.5	M 20 x 1.5	22	6	17.5	6200216	50
M 20 x 1.5	M 25 x 1.5	27	6.5	19	6200220	50
M 25 x 1.5	M 32 x 1.5	34	8	20.5	6200225	20
M 32 x 1.5	M 40 x 1.5	42	7	23	6200232	20
M 40 x 1.5	M 50 x 1.5	53	9	31	6200240	10
M 50 x 1.5	M 63 x 1.5	65	9.5	24	6200250	5
M 63 x 1.5	M 75 x 1.5	80	10.5	26	6200263	1

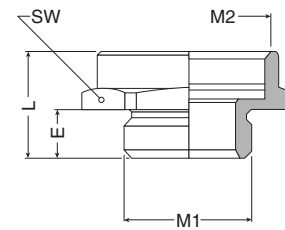


Enlarger, Nickel-Plated Brass

Material:
 • Nickel-plated brass

Characteristics:
 • Metric external thread
 • Metric internal thread
 • Hexagon

External thread	Internal thread	SW mm	Thread length mm (E)	Complete length mm (L)	Cat. No. without O-ring	Cat. No. with O-ring	Std. Pk.
Metric 1	Metric 2						
M12 x 1.5	M16 x 1.5	19	7	19	6200312	6200412	50
M16 x 1.5	M20 x 1.5	22	7	19	6200316	6200416	50
M20 x 1.5	M25 x 1.5	28	7	20	6200320	6200420	50
M25 x 1.5	M32 x 1.5	36	8	21.5	6200325	6200425	20
M32 x 1.5	M40 x 1.5	42	8.5	22	6200332	6200432	20
M40 x 1.5	M50 x 1.5	52	8.5	23	6200340	6200440	10
M50 x 1.5	M63 x 1.5	65	9.5	25	6200350	6200450	5
M63 x 1.5	M75 x 1.5	80	10.5	27.5	6200363	6200463	1



Adapter, PG to Metric Thread, Nickel-Plated Brass

Material:

- Nickel-plated brass

Characteristics:

- PG external thread
- Metric internal thread
- Hexagon

External thread	Internal thread	SW mm	Thread length mm	Complete length mm	Cat. No.	Std. Pk.
Form A						
PG	Metric					
PG 7	M 12 x 1.5	17	6.5	16.5	6604807	50
PG 7	M 16 x 1.5	19	6.5	16.5	6604808	50
PG 9	M 16 x 1.5	19	6.5	16.5	6604810	50
PG 9	M 20 x 1.5	22	6.5	18.5	6604811	50
PG 11	M 20 x 1.5	22	7	17	6604813	50
PG 11	M 25 x 1.5	27	7	18	6604814	50
PG 13.5	M 20 x 1.5	24	7	17	6604816	50
PG 13.5	M 25 x 1.5	27	7	18	6604817	50
PG 16	M 20 x 1.5	27	7	16	6604818	50
PG 16	M 25 x 1.5	27	7	18	6604819	50
PG 16	M 32 x 1.5	36	7	18.5	6604820	50
PG 21	M 32 x 1.5	36	8	19.5	6604822	20
PG 21	M 40 x 1.5	42	8	19.5	6604823	20
PG 29	M 40 x 1.5	42	8.5	20	6604831	20
PG 29	M 50 x 1.5	55	8.5	21	6604832	20
PG 36	M 50 x 1.5	55	8.5	21	6604837	10
PG 42	M 63 x 1.5	65	10	23.5	6604843	5
PG 48	M 63 x 1.5	65	10	24.5	6604849	5
PG 48	M 75 x 1.5	80	10	24.5	6604850	5
Form B						
PG 9	M 12 x 1.5	19	6.5	10	6604809	50
PG 11	M 16 x 1.5	22	7	11	6604812	50
PG 13.5	M 16 x 1.5	24	7	11	6604815	50
PG 21	M 25 x 1.5	32	8	13	6604821	20
PG 29	M 25 x 1.5	40	8.5	14	6604829	20
PG 29	M 32 x 1.5	40	8.5	14	6604830	20
PG 36	M 40 x 1.5	55	8.5	15	6604836	10
PG 42	M 50 x 1.5	58	10	16.5	6604842	5
PG 48	M 50 x 1.5	65	10	17	6604848	5



Form A



Form B

Adapter, Metric to PG Thread, Nickel-Plated Brass

Material:

- Nickel-plated brass
- O-ring: Nitril

Characteristics:

- Metric external thread
- PG internal thread
- Hexagon

External thread	Internal thread	SW mm	Thread length mm	Complete length mm	Cat. No. without O-ring	Cat. No. with O-ring	Std. Pk.
Form A Metric							
M 12 x 1.5	PG 7	14	7	17	6604712	6604658	100
M 16 x 1.5	PG 9	18	7	17.5	6604716	6604660	50
M 16 x 1.5	PG 11	20	7	18	6604715	6604661	50
M 16 x 1.5	PG 13.5	22	7	19.5	6604709	6604662	50
M 16 x 1.5	PG 16	24	7	21.5	6604717	6604663	50
M 20 x 1.5	PG 11	22	7	18	6604720	6604666	50
M 20 x 1.5	PG 13.5	22	7	19.5	6604721	6604664	50
M 20 x 1.5	PG 16	24	7	20.5	6604722	6604667	50
M 20 x 1.5	PG 21	32	7	22.5	6604708	6604668	50
M 25 x 1.5	PG 16	27	8	21.5	6604726	6604669	50
M 25 x 1.5	PG 21	32	8	23.0	6604725	6604670	50
M 25 x 1.5	PG 29	40	8	25	6604727	6604676	20
M 32 x 1.5	PG 21	34	8.5	23.5	6604729	6604672	20
M 32 x 1.5	PG 29	40	8.5	25.0	6604732	6604681	10
M 40 x 1.5	PG 29	42	8.5	25	6604734	6604675	10
M 40 x 1.5	PG 36	50	8.5	28.0	6604740	6604685	10
M 50 x 1.5	PG 36	52	9.5	29	6604742	6604678	10
M 50 x 1.5	PG 42	58	9.5	31.5	6604750	6604689	5
M 63 x 1.5	PG 42	65	10.5	32.5	6604752	6604692	1
M 63 x 1.5	PG 48	65	10.5	32.5	6604763	6604694	1
M 75 x 1.5	PG 48	80	11.5	34.5	6604764	6604695	1
Form B							
M 16 x 1.5	PG 7	18	7	10.5	6604713	6604659	100
M 20 x 1.5	PG 9	22	7	11	6604719	6604665	50
M 25 x 1.5	PG 9	27	8	12	6604707	6604674	50
M 25 x 1.5	PG 11	27	8	12	6604723	6604671	50
M 25 x 1.5	PG 13.5	27	8	12	6604724	6604673	50
M 32 x 1.5	PG 13.5	34	8.5	12.5	6604706	6604677	20
M 32 x 1.5	PG 16	34	8.5	12.5	6604728	6604679	20
M 32 x 1.5	PG 21	34	8.5	12.5	6604730	6604680	20
M 40 x 1.5	PG 16	42	8.5	13.5	6604705	6604682	10
M 40 x 1.5	PG 21	42	8.5	13.5	6604733	6604683	10
M 40 x 1.5	PG 29	42	8.5	13.5	6604735	6604684	20
M 50 x 1.5	PG 21	52	9.5	15.5	6604704	6604686	10
M 50 x 1.5	PG 29	52	9.5	15.5	6604741	6604687	10
M 50 x 1.5	PG 36	52	9.5	15.5	6604743	6604688	10
M 63 x 1.5	PG 29	65	10.5	17.5	6604703	6604690	5
M 63 x 1.5	PG 36	65	10.5	17.5	6604751	6604691	5
M 63 x 1.5	PG 42	65	10.5	17.5	6604753	6604693	5



Form A



Form B

Adapter, PG/M to NPT Thread, Nickel-Plated Brass

Material:

- Nickel-Plated Brass

Characteristics:

- PG/Metric external thread
- NPT internal thread
- Hexagon

External thread	Internal thread	SW mm	Thread length mm	Complete length mm	Cat. No.	Std. Pk.
PG Form A						
PG 7	NPT 3/8"	19	5	19.5	6400400	50
PG 9	NPT 1/2"	24	6	24	6400401	50
PG 11	NPT 1/2"	24	6	24	6400402	50
PG 13.5	NPT 1/2"	24	6.5	24.5	6400403	50
PG 13.5	NPT 3/4"	30	6.5	25	6400404	50
PG 16	NPT 1/2"	24	6.5	24.5	6400405	50
PG 16	NPT 3/4"	30	6.5	25	6400406	50
PG 21	NPT 3/4"	30	7	23	6400407	20
PG 21	NPT 1"	36	7	30	6400408	20
PG 29	NPT 1 1/4"	50	8	32	6400410	20
PG 36	NPT 1 1/2"	55	9	34	6400412	10
PG 48	NPT 2"	64	10	35	6400415	5
Form B						
PG 29	NPT 1"	40	8	18	6400409	20
PG 36	NPT 1 1/4"	50	9	18.5	6400411	10
PG 42	NPT 1 1/2"	60	10	19.5	6400413	5
PG 48	NPT 1 1/2"	64	10	19.5	6400414	5
Metric Form A						
M16 x 1.5	NPT 3/8"	19	7	21.5	6402316	50
M16 x 1.5	NPT 1/2"	24	7	25	6402317	50
M20 x 1.5	NPT 1/2"	24	7	25	6402321	50
M25 x 1.5	NPT 3/4"	30	8	27	6402326	20
M32 x 1.5	NPT 1"	36	8.5	31	6402333	10
Form B						
M20 x 1.5	NPT 3/8"	24	7	13	6402320	50
M25 x 1.5	NPT 1/2"	30	8	15	6402325	20
M32 x 1.5	NPT 3/4"	36	8.5	15.5	6402332	10



Form A



Form B

Adapter, NPT to PG/M Thread, Nickel-Plated Brass

Material:

- Nickel-plated brass

Characteristics:

- NPT external thread
- PG or M internal thread
- Hexagon

External Thread	Internal Thread	SW mm	Thread Length mm (E)	Complete Length mm (L)	Cat. No.	Std. Pk.
NPT	PG					
3/8"	PG 7	19.0	15.0	20.0	6402020	50
1/2"	PG 9	22.0	20.0	25.0	6402038	50
1/2"	PG 11	22.0	20.0	28.0	6402046	50
1/2"	PG 13.5	24.0	20.0	30.0	6402054	50
1/2"	PG 16	24.0	20.0	30.0	6402055	50
3/4"	PG 11	29.0	20.0	30.0	6402060	50
3/4"	PG 13.5	29.0	20.0	30.0	6402062	50
3/4"	PG 16	29.0	20.0	30.0	6402070	50
3/4"	PG 21	32.0	20.0	32.0	6402072	50
1"	PG 16	36.0	25.0	35.0	6402087	20
1"	PG 21	36.0	25.0	35.0	6402089	20
1"	PG 29	42.0	25.0	38.0	6402091	20
1 1/4"	PG 29	46.0	25.0	35.0	6402097	20
1 1/4"	PG 36	50.0	25.0	42.0	6402099	10
1 1/2"	PG 36	52.0	26.0	42.0	6402100	10
1 1/2"	PG 48	65.0	26.0	49.0	6402102	5
2"	PG 48	65.0	27.0	50.0	6402119	5
NPT	Metric					
3/8"	M 20	23.0	15.0	26.0	6402214	50
3/8"	M 25	28.0	15.0	27.0	6402215	50
1/2"	M 20	23.0	20.0	30.0	6402216	50
1/2"	M 25	28.0	20.0	32.0	6402217	50
1"	M 20	36.0	25.0	31.0	6402218	20
1"	M 25	36.0	25.0	31.0	6402219	20

